

DOWNTOWN ASHEVILLE OFFICE FOR LEASE IN HISTORIC JACKSON ROW

22 S Pack Square, Asheville, NC 28801

VARIOUS SIZE OFFICES AVAILABLE

| ONSITE PARKING

| FULL SERVICE LEASES



Austin Walker, CCIM, SIOR/Commercial Broker

CELL: 828.713.0777

OFFICE: 828.418.1278

AWALKER@WHITNEYCRE.COM

**Stephanie West, CCIM
Commercial Broker**

CELL: 828.712.2828

OFFICE: 828.418.1277

Whitney Commercial Real Estate Services

1100 Ridgefield Blvd, Suite 100, Asheville, NC 28806

828.665.9085 | whitneycre.com

All information herein obtained from sources deemed reliable but not guaranteed, and may change or be updated without notice.



PROPERTY DESCRIPTION

Wide range of office spaces in varying sizes now available in the Jackson Building, one of Asheville's most impressive structures and Western North Carolina's first skyscraper. Architect Ronald Greene captured the neo-gothic style with mountains of glass and terra cotta resulting in one of Asheville's most recognizable buildings.

Located in the center of downtown Asheville's popular Pack Square and steps away from the city's best restaurants, coffee shops, and shopping. Quickly check off your must have list with incredible views, abundant natural light, functional floor plans, and competitive pricing.

Currently undergoing exciting and professionally designed renovations including new paint and carpet in offices and common areas, new restrooms, renovation of main lobby, and fun additions including artwork, wayfinding signage, and designer lighting.



PROPERTY HIGHLIGHTS

- Onsite garage parking
- Full service lease structure with shared amenities
- Competitive rates include all utilities, janitorial, and maintenance
- Full time onsite property manager and maintenance staff
- Close to I-240 for easy access to I-40 and I-26

Stephanie West, CCIM
Commercial Broker

CELL: 828.712.2828
OFFICE: 828.418.1277
SWEST@WHITNEYCRE.COM

Austin Walker, CCIM, SIOR
Commercial Broker

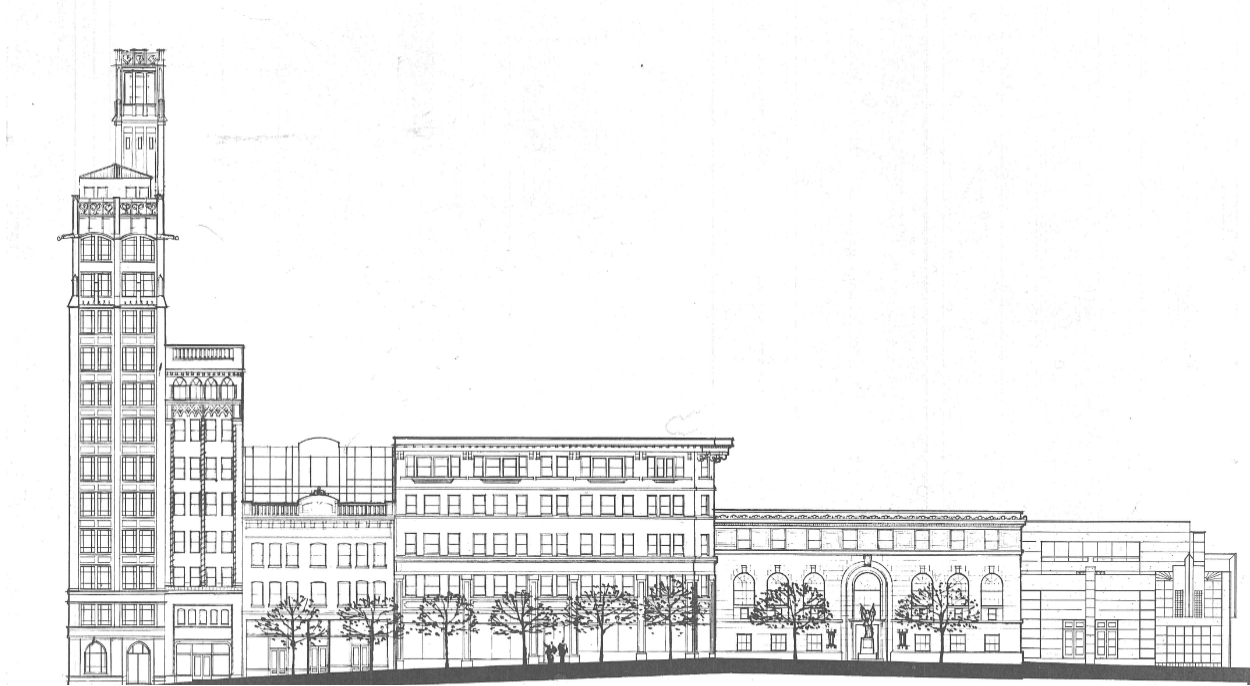
CELL: 828.713.0777
OFFICE: 828.418.1278
AWALKER@WHITNEYCRE.COM

Whitney Commercial Real Estate Services

1100 Ridgefield Blvd, Suite 100, Asheville, NC 28806
828.665.9085 | whitneycre.com

AVAILABLE SUITES

22 S Pack Square, Asheville, NC 28801



AVAILABLE SPACES

SUITE	SIZE (SF)	LEASE TYPE	LEASE RATE	MONTHLY RATE
Suite 800 (Entire 8th Floor)	2,130 SF	Full Service	\$30.00 SF/yr	\$5,325
Suite 700 (Entire 7th Floor)	2,130 SF	Full Service	\$30.00 SF/yr	\$5,325
Suite 304	930 SF	Full Service	\$25.75 SF/yr	\$1,996
Suite 300	2,495 SF	Full Service	\$22.00 SF/yr	\$3,468
Suite 200	658 SF	Full Service	\$24.75 SF/yr	\$1,357
Suite 201	378 SF	Full Service	\$24.75 SF/yr	\$780
Suite 202	288 SF	Full Service	\$24.75 SF/yr	\$594
Suite 203	2,590 SF	Full Service	\$24.75 SF/yr	\$5,342
Suite 200A (Entire 2nd Floor)	4,927 SF	Full Service	\$24.75 SF/yr	\$10,162
Suite 101	2,904 SF	Full Service	\$25.00 SF/yr	\$6,050
Suite 404	1,543 SF	Full Service	\$25.75 SF/yr	\$3,311

Stephanie West, CCIM
Commercial Broker

CELL: 828.712.2828
OFFICE: 828.418.1277
SWEST@WHITNEYCRE.COM

Austin Walker, CCIM, SIOR
Commercial Broker

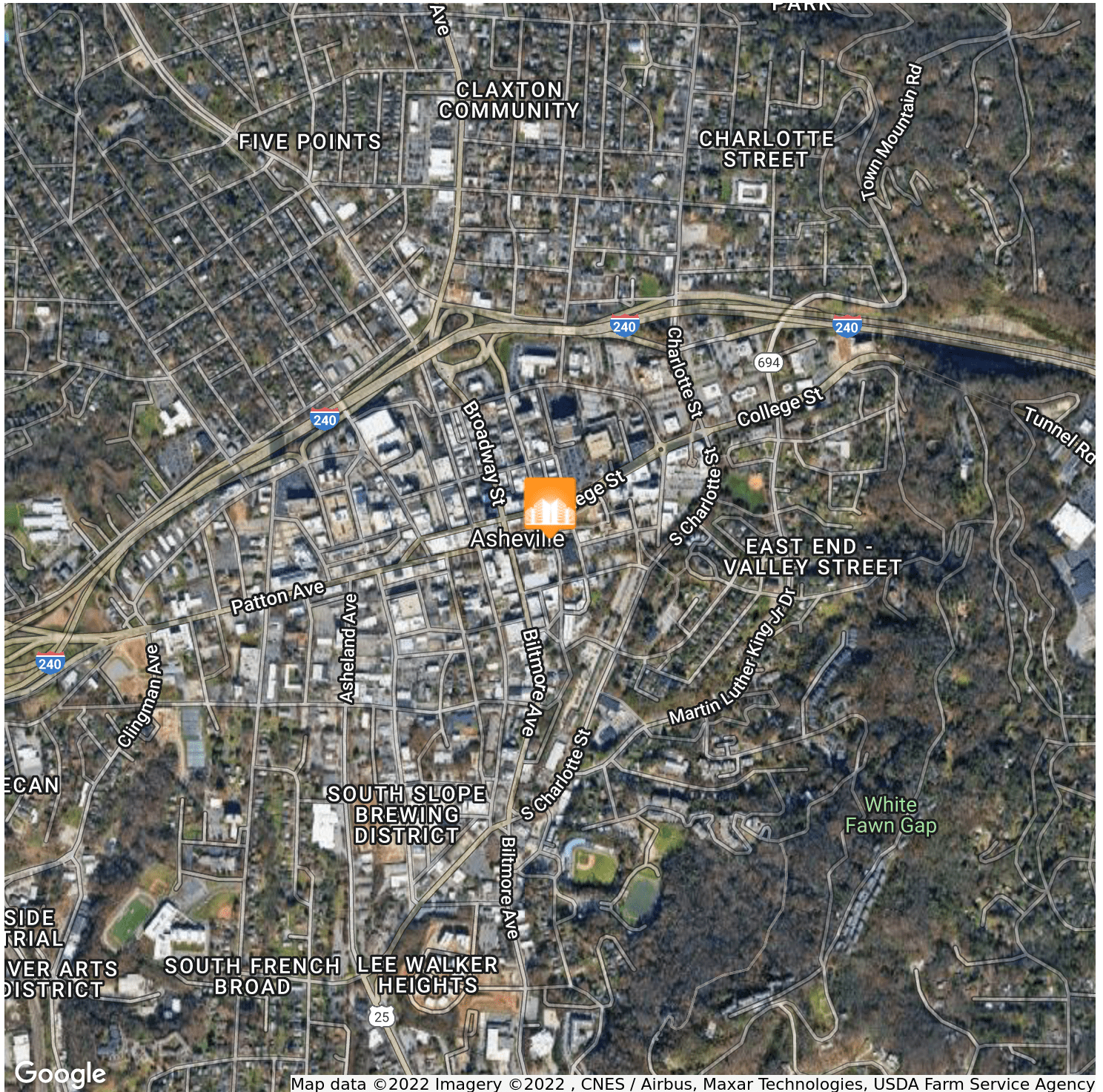
CELL: 828.713.0777
OFFICE: 828.418.1278
AWALKER@WHITNEYCRE.COM

Whitney Commercial Real Estate Services

1100 Ridgefield Blvd, Suite 100, Asheville, NC 28806
828.665.9085 | whitneycre.com

FOR LEASE

22 S Pack Square, Asheville, NC 28801



Stephanie West, CCIM
Commercial Broker

CELL: 828.712.2828
OFFICE: 828.418.1277
SWEST@WHITNEYCRE.COM

Austin Walker, CCIM, SIOR
Commercial Broker

CELL: 828.713.0777
OFFICE: 828.418.1278
AWALKER@WHITNEYCRE.COM

Whitney Commercial Real Estate Services

1100 Ridgefield Blvd, Suite 100, Asheville, NC 28806
828.665.9085 | whitneycre.com

All information herein obtained from sources deemed reliable but not guaranteed, and may change or be updated without notice.

SUITE 700

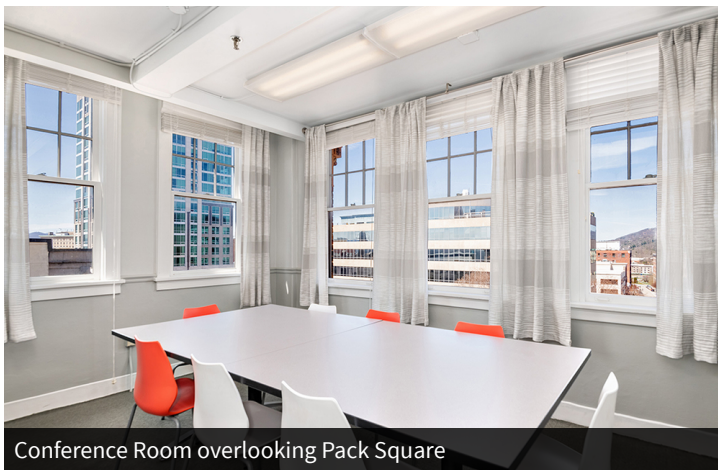
Jackson Building 22 S Pack Square, Asheville, NC 28801



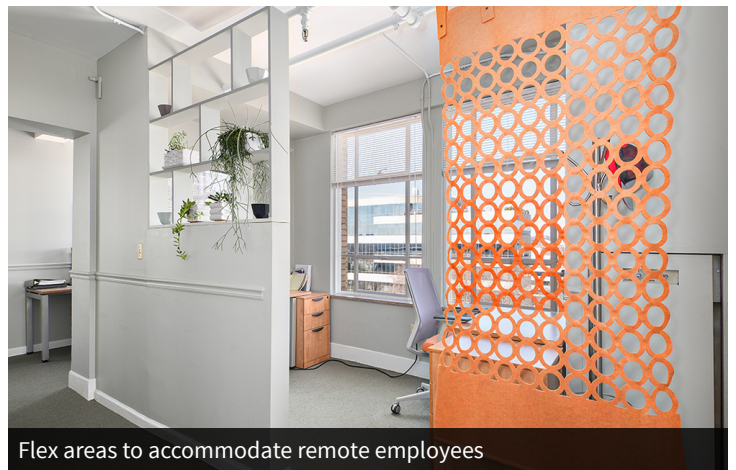
360 Views



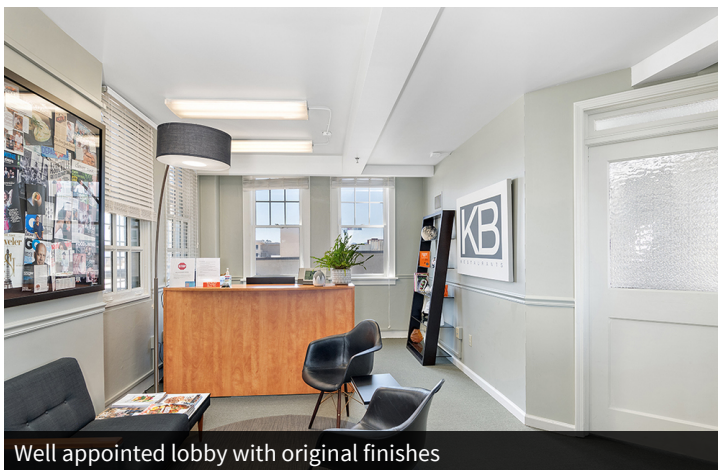
Corner office



Conference Room overlooking Pack Square



Flex areas to accommodate remote employees



Well appointed lobby with original finishes



Full breakroom with kitchenette

Stephanie West, CCIM
Commercial Broker

CELL: 828.712.2828
OFFICE: 828.418.1277
SWEST@WHITNEYCRE.COM

Austin Walker, CCIM, SIOR
Commercial Broker

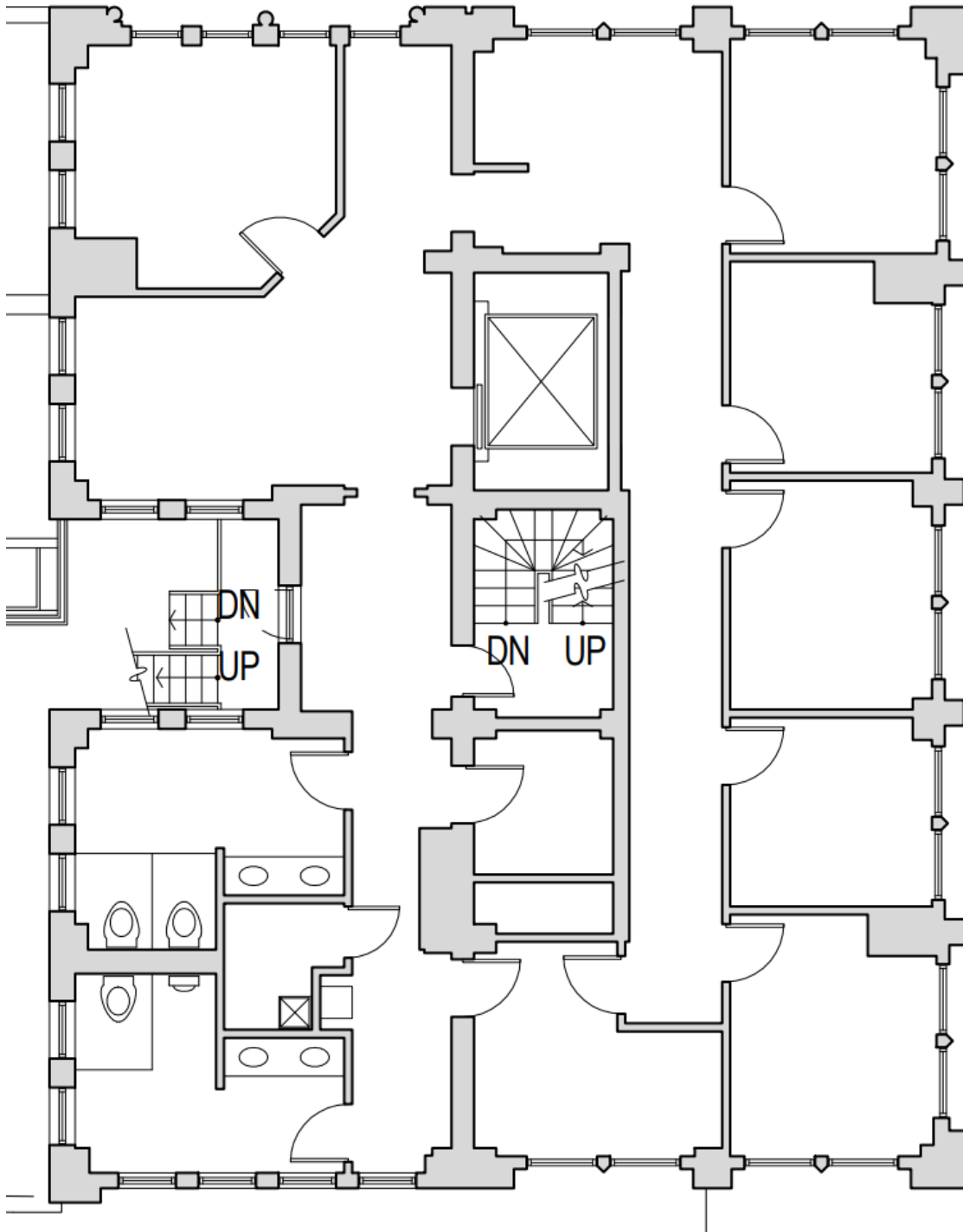
CELL: 828.713.0777
OFFICE: 828.418.1278
AWALKER@WHITNEYCRE.COM

Whitney Commercial Real Estate Services

1100 Ridgefield Blvd, Suite 100, Asheville, NC 28806
828.665.9085 | whitneycre.com

All information herein obtained from sources deemed reliable but not guaranteed, and may change or be updated without notice.

SUITE 700 2,130 USABLE SF \$30/SF FULL SERVICE



Stephanie West, CCIM
Commercial Broker

CELL: 828.712.2828
OFFICE: 828.418.1277
SWEST@WHITNEYCRE.COM

Austin Walker, CCIM, SIOR
Commercial Broker

CELL: 828.713.0777
OFFICE: 828.418.1278
AWALKER@WHITNEYCRE.COM

Whitney Commercial Real Estate Services

1100 Ridgefield Blvd, Suite 100, Asheville, NC 28806
828.665.9085 | whitneycre.com

All information herein obtained from sources deemed reliable but not guaranteed, and may change or be updated without notice.

OFFICE FOR LEASE - DOWNTOWN ASHEVILLE

2 AVAILABLE UNITS

PRIVATE PARKING

\$29.50 / SF FULL SERVICE



Austin Walker, CCIM, SIOR/Commercial Broker

CELL: 828.713.0777

OFFICE: 828.418.1278

AWALKER@WHITNEYCRE.COM

**Stephanie West, CCIM
Commercial Broker**

CELL: 828.712.2828

OFFICE: 828.418.1277

Whitney Commercial Real Estate Services

1100 Ridgefield Blvd, Suite 100, Asheville, NC 28806

828.665.9085 | whitneycre.com

All information herein obtained from sources deemed reliable but not guaranteed, and may change or be updated without notice.

FOR LEASE

9 SW Pack Square, Asheville, NC 28801



PROPERTY DESCRIPTION

Well-appointed offices are now available in downtown Asheville's historic Adler Building. This recognizable building serves as the anchor to the corner of Pack Square and just steps away from the epicenter and activity of downtown. Quickly check off your must have list with sky high ceilings, abundant natural light, hardwood flooring, incredible views, functional floor plans, and competitive pricing. Full service lease structures, shared building amenities, and availability to private garage parking.

AVAILABLE SPACES	FULL SERVICE RATE	SIZE
9 SW Pack Square Suite 201	\$29.50 SF/yr	1,552 SF
9 SW Pack Square Suite 210	\$29.50 SF/yr	1,983 SF

PROPERTY HIGHLIGHTS

- Historic Adler Building serves as anchored corner to Pack Square
- Several office suites available in various configurations
- Located in center of downtown steps away from amenities
- Incredible views and abundant natural light
- Full service lease structure with shared amenities
- Availability to private garage parking
- Attractive and welcoming lobby at street level

Stephanie West, CCIM
Commercial Broker

CELL: 828.712.2828
OFFICE: 828.418.1277
SWEST@WHITNEYCRE.COM

Austin Walker, CCIM, SIOR
Commercial Broker

CELL: 828.713.0777
OFFICE: 828.418.1278
AWALKER@WHITNEYCRE.COM

Whitney Commercial Real Estate Services

1100 Ridgefield Blvd, Suite 100, Asheville, NC 28806
828.665.9085 | whitneycre.com

FOR LEASE - SUITES 201, 210

9 SW Pack Square, Asheville, NC 28801



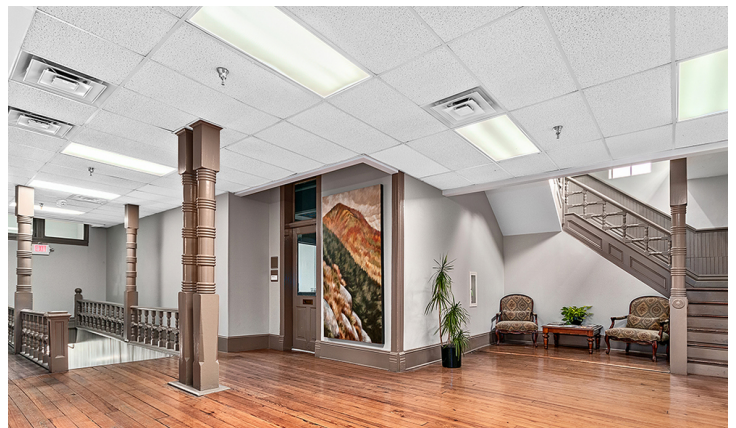
Corner office view from Suite 210



Large private office with bright windows in Suite 210



Open Work Area in Suite 210



Building Lobby for Suites 210 and 201



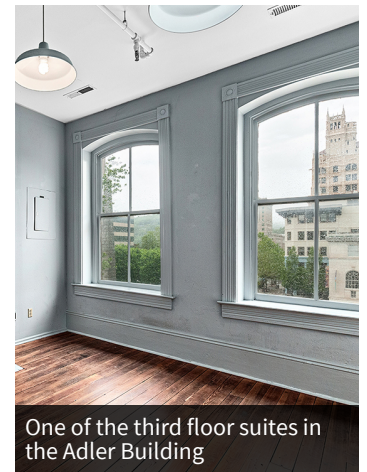
Lobby stairs to third level



One of the third floor suites in the Adler Building



One of the third floor suites in the Adler Building



One of the third floor suites in the Adler Building

Stephanie West, CCIM
Commercial Broker

CELL: 828.712.2828
OFFICE: 828.418.1277
SWEST@WHITNEYCRE.COM

Austin Walker, CCIM, SIOR
Commercial Broker

CELL: 828.713.0777
OFFICE: 828.418.1278
AWALKER@WHITNEYCRE.COM

Whitney Commercial Real Estate Services

1100 Ridgefield Blvd, Suite 100, Asheville, NC 28806
828.665.9085 | whitneycre.com

All information herein obtained from sources deemed reliable but not guaranteed, and may change or be updated without notice.



*All maps, aerials, illustrations, and measurements are approximated.

Stephanie West, CCIM
Commercial Broker

CELL: 828.712.2828
OFFICE: 828.418.1277
SWEST@WHITNEYCRE.COM

Austin Walker, CCIM, SIOR
Commercial Broker

CELL: 828.713.0777
OFFICE: 828.418.1278
AWALKER@WHITNEYCRE.COM

Whitney Commercial Real Estate Services

1100 Ridgefield Blvd, Suite 100, Asheville, NC 28806
828.665.9085 | whitneycre.com

All information herein obtained from sources deemed reliable but not guaranteed, and may change or be updated without notice.